

## 百分比的加减乘除

姓名: \_\_\_\_\_

日期: \_\_\_\_\_ 分数: \_\_\_\_\_

$23 - 80\% = \underline{\hspace{2cm}}$

$16 \div 80\% = \underline{\hspace{2cm}}$

$25 \times 10\% = \underline{\hspace{2cm}}$

$44 \times 20\% = \underline{\hspace{2cm}}$

$41 \div 10\% = \underline{\hspace{2cm}}$

$16 \times 90\% = \underline{\hspace{2cm}}$

$20 + 50\% = \underline{\hspace{2cm}}$

$13 \div 20\% = \underline{\hspace{2cm}}$

$8 \div 40\% = \underline{\hspace{2cm}}$

$11 + 20\% = \underline{\hspace{2cm}}$

$43 \times 20\% = \underline{\hspace{2cm}}$

$45 + 70\% = \underline{\hspace{2cm}}$

$19 + 50\% = \underline{\hspace{2cm}}$

$10 - 20\% = \underline{\hspace{2cm}}$

$40 - 50\% = \underline{\hspace{2cm}}$

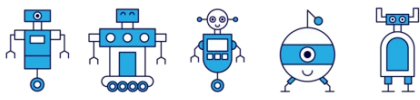
$12 + 60\% = \underline{\hspace{2cm}}$

$6 \div 80\% = \underline{\hspace{2cm}}$

$30 \div 10\% = \underline{\hspace{2cm}}$

$48 \div 10\% = \underline{\hspace{2cm}}$

$42 \div 20\% = \underline{\hspace{2cm}}$



姓名: \_\_\_\_\_

日期: \_\_\_\_\_ 分数: \_\_\_\_\_

$23 - 80\% = 22.2$

$16 \div 80\% = 20$

$25 \times 10\% = 2.5$

$44 \times 20\% = 8.8$

$41 \div 10\% = 410$

$16 \times 90\% = 14.4$

$20 + 50\% = 20.5$

$13 \div 20\% = 65$

$8 \div 40\% = 20$

$11 + 20\% = 11.2$

$43 \times 20\% = 8.6$

$45 + 70\% = 45.7$

$19 + 50\% = 19.5$

$10 - 20\% = 9.8$

$40 - 50\% = 39.5$

$12 + 60\% = 12.6$

$6 \div 80\% = 7.5$

$30 \div 10\% = 300$

$48 \div 10\% = 480$

$42 \div 20\% = 210$