



## Porcentagens de números (número ausente)

Nome: \_\_\_\_\_

Encontro: Data: \_\_\_\_\_ Pontuação: \_\_\_\_\_

$$\underline{\hspace{2cm}} \times 90\% = 63$$

$$\underline{\hspace{2cm}} \times 60\% = 20.4$$

$$\underline{\hspace{2cm}} \times 40\% = 24.4$$

$$\underline{\hspace{2cm}} \times 70\% = 30.1$$

$$\underline{\hspace{2cm}} \times 70\% = 39.2$$

$$\underline{\hspace{2cm}} \times 10\% = 6.6$$

$$\underline{\hspace{2cm}} \times 80\% = 28$$

$$\underline{\hspace{2cm}} \times 90\% = 43.2$$

$$\underline{\hspace{2cm}} \times 70\% = 59.5$$

$$\underline{\hspace{2cm}} \times 30\% = 22.8$$

$$\underline{\hspace{2cm}} \times 40\% = 1.6$$

$$\underline{\hspace{2cm}} \times 10\% = 3.4$$

$$\underline{\hspace{2cm}} \times 40\% = 34.4$$

$$\underline{\hspace{2cm}} \times 90\% = 26.1$$

$$\underline{\hspace{2cm}} \times 80\% = 65.6$$

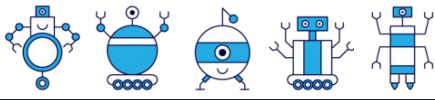
$$\underline{\hspace{2cm}} \times 70\% = 14$$

$$\underline{\hspace{2cm}} \times 10\% = 5.9$$

$$\underline{\hspace{2cm}} \times 30\% = 14.4$$

$$\underline{\hspace{2cm}} \times 20\% = 3.6$$

$$\underline{\hspace{2cm}} \times 70\% = 44.8$$



Nome: \_\_\_\_\_

Encontro: Data: \_\_\_\_\_ Pontuação: \_\_\_\_\_

$$70 \times 90\% = 63$$

$$34 \times 60\% = 20.4$$

$$61 \times 40\% = 24.4$$

$$43 \times 70\% = 30.1$$

$$56 \times 70\% = 39.2$$

$$66 \times 10\% = 6.6$$

$$35 \times 80\% = 28$$

$$48 \times 90\% = 43.2$$

$$85 \times 70\% = 59.5$$

$$76 \times 30\% = 22.8$$

$$4 \times 40\% = 1.6$$

$$34 \times 10\% = 3.4$$

$$86 \times 40\% = 34.4$$

$$29 \times 90\% = 26.1$$

$$82 \times 80\% = 65.6$$

$$20 \times 70\% = 14$$

$$59 \times 10\% = 5.9$$

$$48 \times 30\% = 14.4$$

$$18 \times 20\% = 3.6$$

$$64 \times 70\% = 44.8$$