

تحويل النسب المئوية إلى أعداد عشرية

اسم: _____

التاريخ: _____ النتيجة _____

$0,35 = \underline{\hspace{2cm}} \%$

$1,48 = \underline{\hspace{2cm}} \%$

$0,52 = \underline{\hspace{2cm}} \%$

$0,75 = \underline{\hspace{2cm}} \%$

$1,92 = \underline{\hspace{2cm}} \%$

$0,53 = \underline{\hspace{2cm}} \%$

$0,86 = \underline{\hspace{2cm}} \%$

$0,38 = \underline{\hspace{2cm}} \%$

$0,1 = \underline{\hspace{2cm}} \%$

$1,27 = \underline{\hspace{2cm}} \%$

$1,14 = \underline{\hspace{2cm}} \%$

$0,98 = \underline{\hspace{2cm}} \%$

$0,16 = \underline{\hspace{2cm}} \%$

$0,93 = \underline{\hspace{2cm}} \%$

$1,5 = \underline{\hspace{2cm}} \%$

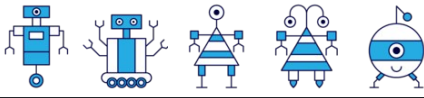
$0,04 = \underline{\hspace{2cm}} \%$

$0,09 = \underline{\hspace{2cm}} \%$

$0,15 = \underline{\hspace{2cm}} \%$

$1,78 = \underline{\hspace{2cm}} \%$

$0,88 = \underline{\hspace{2cm}} \%$



اسم: _____

تاريخ: _____ النتيجة _____

$$0,35 = 35\%$$

$$1,48 = 148\%$$

$$0,52 = 52\%$$

$$0,75 = 75\%$$

$$1,92 = 192\%$$

$$0,53 = 53\%$$

$$0,86 = 86\%$$

$$0,38 = 38\%$$

$$0,1 = 10\%$$

$$1,27 = 127\%$$

$$1,14 = 114\%$$

$$0,98 = 98\%$$

$$0,16 = 16\%$$

$$0,93 = 93\%$$

$$1,5 = 150\%$$

$$0,04 = 4\%$$

$$0,09 = 9\%$$

$$0,15 = 15\%$$

$$1,78 = 178\%$$

$$0,88 = 88\%$$